

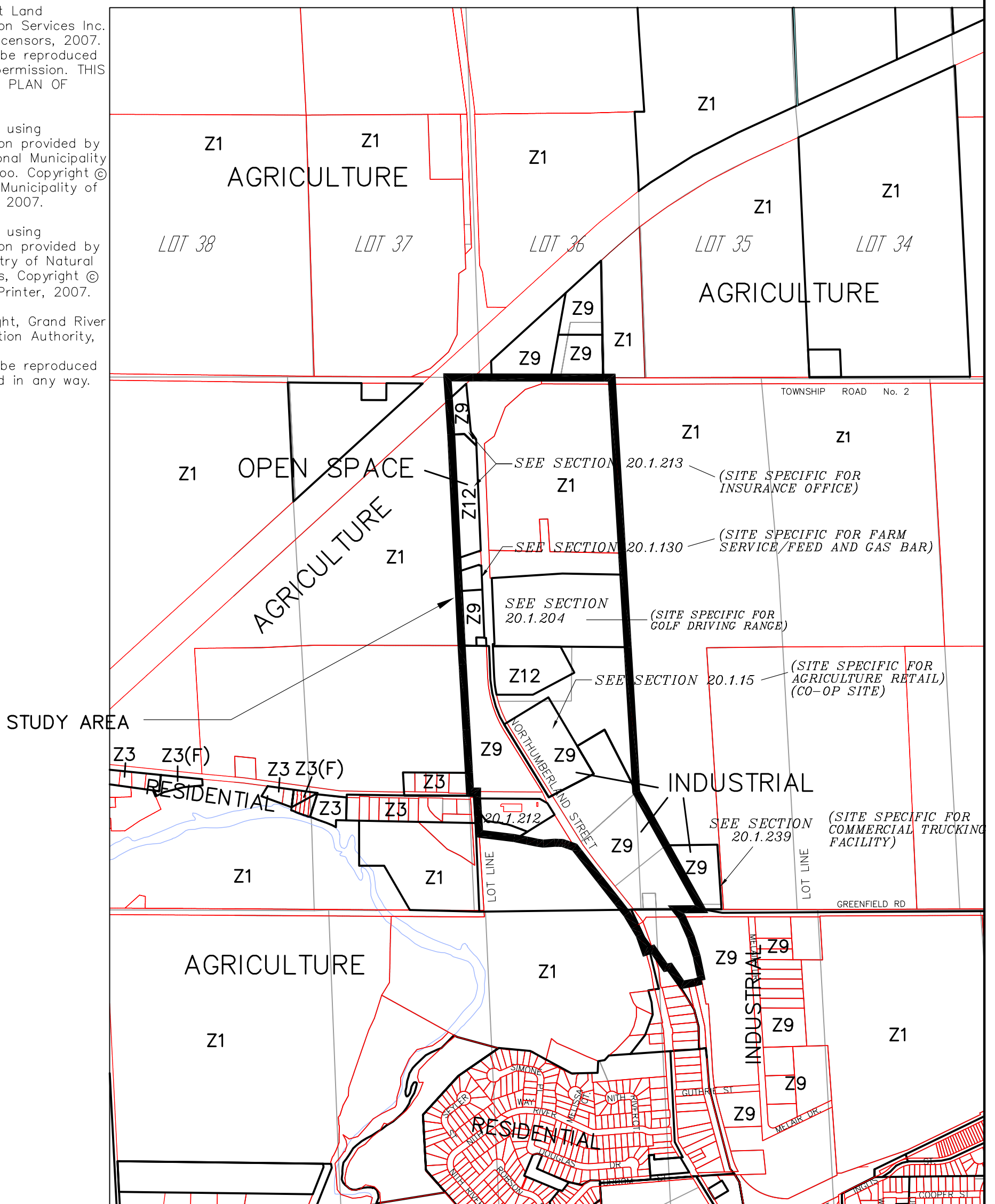
© Teranet Land Information Services Inc. and its licensors, 2007. May not be reproduced without permission. THIS IS NOT A PLAN OF SURVEY.

Produced using information provided by the Regional Municipality of Waterloo. Copyright © Regional Municipality of Waterloo, 2007.

Produced using information provided by the Ministry of Natural Resources, Copyright © Queen's Printer, 2007.

© Copyright, Grand River Conservation Authority, 2007.

May not be reproduced or altered in any way.



Note:

This map was prepared for discussion purposes only by compiling the following maps from the Township of North Dumfries Official Plan and/or Zoning By-law

Maps 42, 60-62, 73-75 from the Official Plan were grouped together to create this map

For conformation of the appropriate policy(ies) and/or zone(s) affecting any particular property or land area, please either refer to the above listed document(s) and map(s) or contact the Township's planning consultants at K. Smart Associates Limited, (519)748-1199 or www.ksmart.on.ca



K. SMART ASSOCIATES LIMITED
CONSULTING ENGINEERS AND PLANNERS
KITCHENER SUDBURY ENGLEHART RAINY RIVER

**TOWNSHIP OF NORTH DUMFRIES
ZONES AND CURRENT USES**

JOB NUMBER:
04-060

JUNE 2007