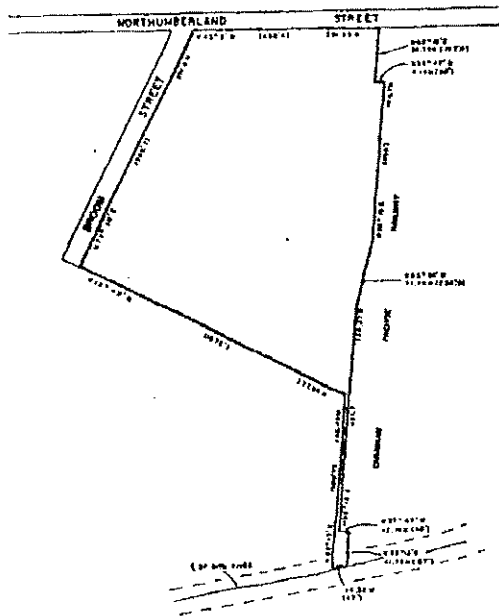


PART OF LOT I, REG. PLAN 679
 PART OF LOT II, REG. PLAN 681
 PART OF LOT 36, CONCESSION VIII
 TOWNSHIP OF NORTH DUMFRIES
 (FORMER VILLAGE OF AYR)

THIS IS SCHEDULE 'X' TO BY-LAW 600-83
 PASSED THIS 13th DAY OF July, 1983.

Franklin A. Lisso
MAYOR
Harry Griffin
CLERK

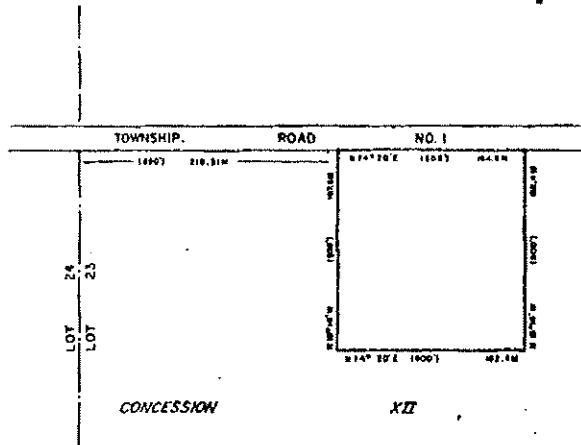


NOTE: APPROXIMATE IMPERIAL EQUIVALENTS SHOWN IN BRACKETS.

SEE PART 139 - SCHEDULE 'B'
 SCALE 1:4000

SECTION 201.4

PART OF LOT 23
 CONCESSION XII
 TOWNSHIP OF NORTH DUMFRIES



NOTE: APPROXIMATE IMPERIAL EQUIVALENTS SHOWN IN BRACKETS.

THIS IS SCHEDULE 'X' TO BY-LAW 609-83
 PASSED THIS 13th DAY OF July, 1983.

Franklin A. Lisso
MAYOR
Harry Griffin
CLERK

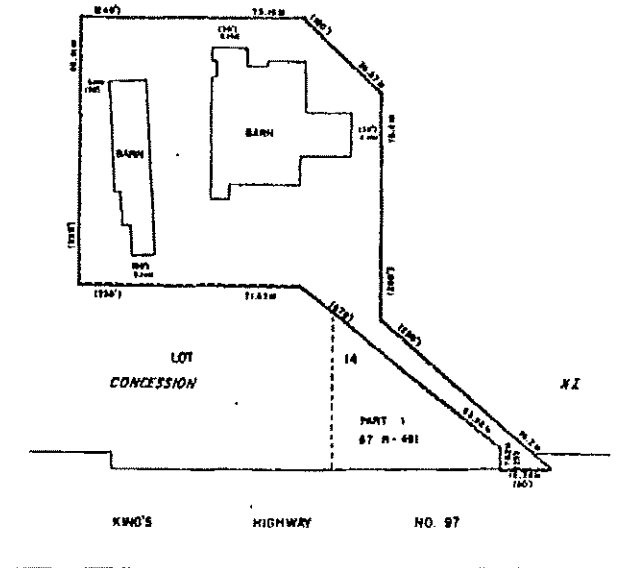
SEE PART 91 - SCHEDULE 'B'
 SCALE 1:3000

SECTION 201.5

PART OF LOT 14
 CONCESSION XI
 TOWNSHIP OF NORTH DUMFRIES

THIS IS SCHEDULE 'A' TO BY-LAW 689-83,
 PASSED THIS 13th DAY OF July, 1983.

Franklin A. Lisso
MAYOR
Harry Griffin
CLERK



CONCESSION LOT 14 XI

NOTE: APPROXIMATE IMPERIAL EQUIVALENTS SHOWN IN BRACKETS.
 ALL DIMENSIONS ARE APPROXIMATE.

SEE PART 76 - SCHEDULE 'B'
 SCALE 1:1250

SECTION 201.6