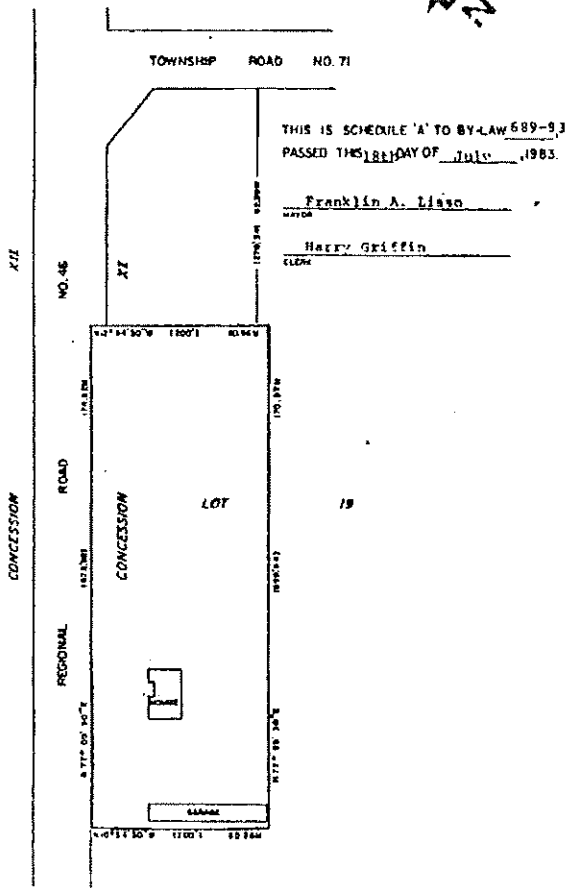


PART OF LOT 19
CONCESSION XI
TOWNSHIP OF NORTH DUMFRIES



THIS IS SCHEDULE 'A' TO BY-LAW 689-83,
PASSED THIS 18th DAY OF July, 1983.

Franklin A. Lissu
MAYOR

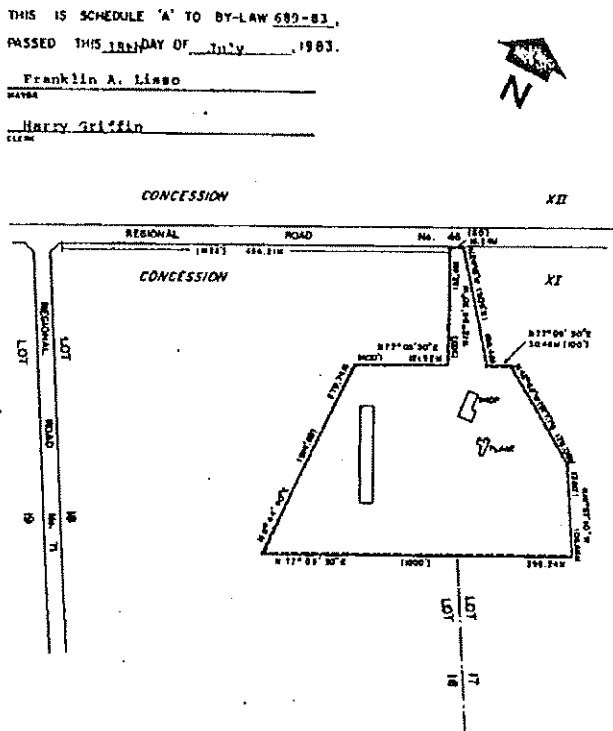
Harry Griffin
CLERK

NOTE APPROXIMATE IMPERIAL EQUIVALENTS SHOWN IN BRACKETS.

SEE PART 78 - SCHEDULE 'B'
SCALE 1:250

SECTION 20 J. 10

PART OF LOTS 17 & 18
CONCESSION XI
TOWNSHIP OF NORTH DUMFRIES



THIS IS SCHEDULE 'A' TO BY-LAW 689-83,
PASSED THIS 18th DAY OF July, 1983.

Franklin A. Lissu
MAYOR

Harry Griffin
CLERK

NOTE APPROXIMATE IMPERIAL EQUIVALENTS SHOWN IN BRACKETS.

SEE PARTS 77 & 78 - SCHEDULE 'B'
SCALE 1:5000

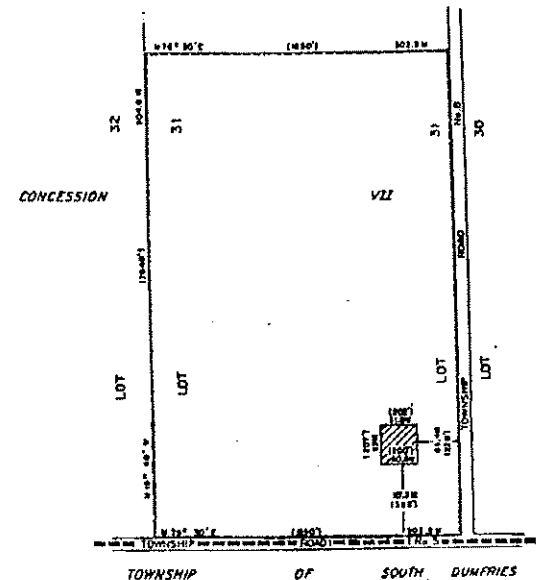
SECTION 20 I. 11

PART OF LOT 31
CONCESSION VII
TOWNSHIP OF NORTH DUMFRIES

THIS IS SCHEDULE 'A' TO BY-LAW 689-83,
PASSED THIS 18th DAY OF July, 1983.

Franklin A. Lissu
MAYOR

Harry Griffin
CLERK



NOTE APPROXIMATE IMPERIAL EQUIVALENTS SHOWN IN BRACKETS.
AREA OF OPERATION

SEE PART 17 - SCHEDULE 'B'
SCALE 1:6000

SECTION 20.1.12