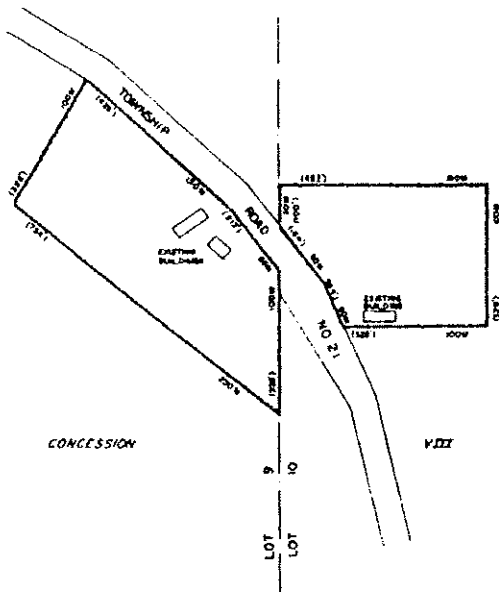


PART OF LOTS 9 & 10
CONCESSION VIII
TOWNSHIP OF NORTH DUMFRIES
BEVERLY SECTION



REMOVED BY BY-LAW 1070-88

NOTE APPROXIMATE IMPERIAL EQUIVALENTS SHOWN IN BRACKETS
ALL DIMENSIONS ARE APPROXIMATE

THIS IS SCHEDULE 'A' TO BY-LAW 624-83,
PASSED THIS 14th DAY OF July, 1983.

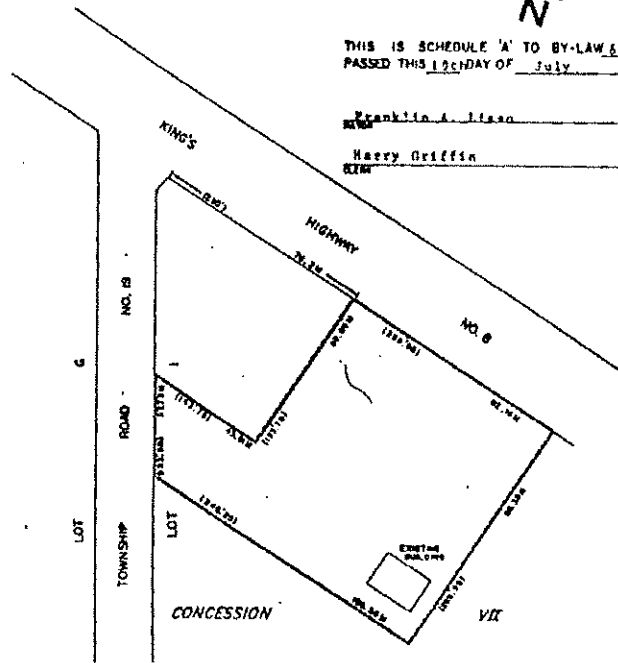
Franklin A. Lisso
WATER

Harry Griffin
CLEAN

SCALE: 1/2500
SEE PARTS 103 & 114 - SCHEDULE 'B'

SECTION 20.1.40

PART OF LOT 1
CONCESSION VII
TOWNSHIP OF NORTH DUMFRIES
BEVERLY SECTION



THIS IS SCHEDULE 'A' TO BY-LAW 682-83,
PASSED THIS 12th DAY OF July, 1983.

Franklin A. Lisso
WATER

Harry Griffin
CLEAN

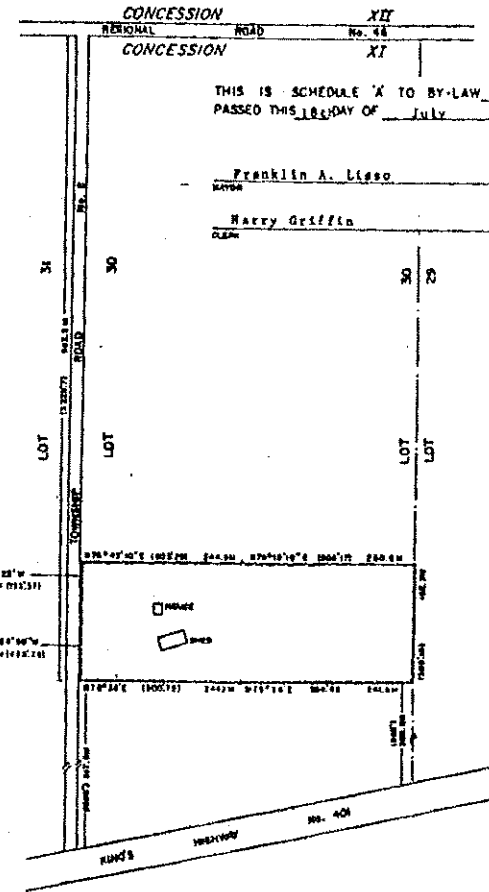
NOTE: APPROXIMATE IMPERIAL EQUIVALENTS SHOWN IN BRACKETS.

SEE PART 103 - SCHEDULE 'B'
SCALE: 1/1250

SECTION 20.1.41



PART OF LOT 30
CONCESSION XI
TOWNSHIP OF NORTH DUMFRIES



THIS IS SCHEDULE 'A' TO BY-LAW 682-83,
PASSED THIS 18th DAY OF July, 1983.

Franklin A. Lisso
WATER

Harry Griffin
CLEAN

NOTE: APPROXIMATE IMPERIAL EQUIVALENTS SHOWN IN BRACKETS.

SEE PART 84 - SCHEDULE 'B'
SCALE: 1/6000

SECTION 20.1.42