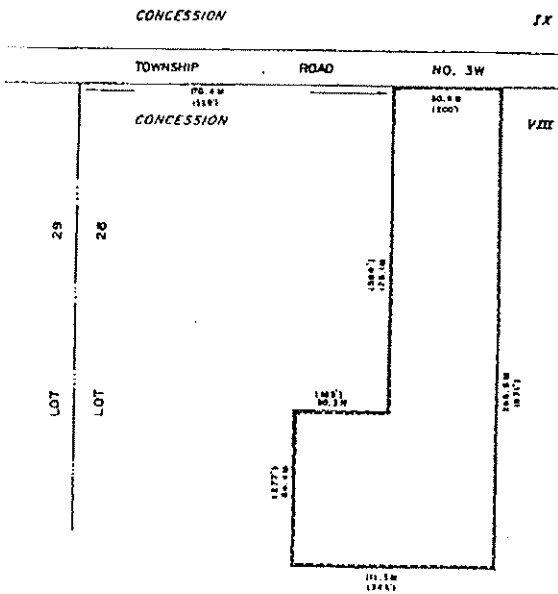


PART OF LOT 28
CONCESSION VIII
TOWNSHIP OF NORTH DUMFRIES



NOTE: APPROXIMATE IMPERIAL EQUIVALENTS SHOWN IN BRACKETS.



THIS IS SCHEDULE 'A' TO BY-LAW 689-83,
PASSED THIS 18th DAY OF July, 1983.

Franklin A. Lissu
MAYOR

Harry Griffin
CLERK

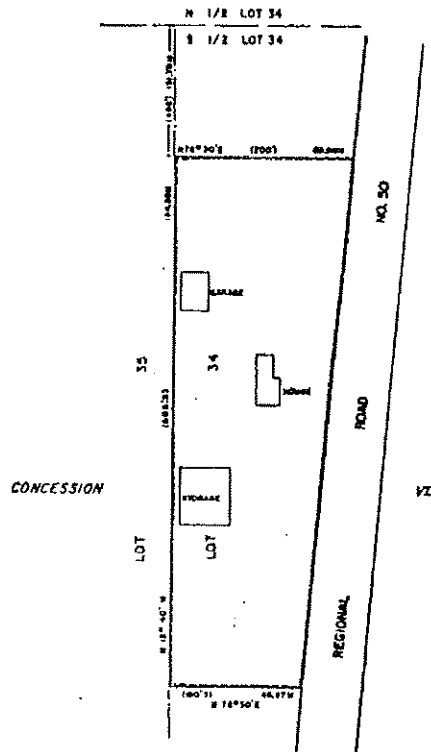
PART 38 - SCHEDULE 'B'
LE-1 2000

SECTION 20.1.43

PART OF LOT 34
CONCESSION VII
TOWNSHIP OF NORTH DUMFRIES



APPROXIMATE IMPERIAL EQUIVALENTS SHOWN IN BRACKETS.



THIS IS SCHEDULE 'A' TO BY-LAW 689-83,
PASSED THIS 18th DAY OF July, 1983.

Franklin A. Lissu
MAYOR

Harry Griffin
CLERK

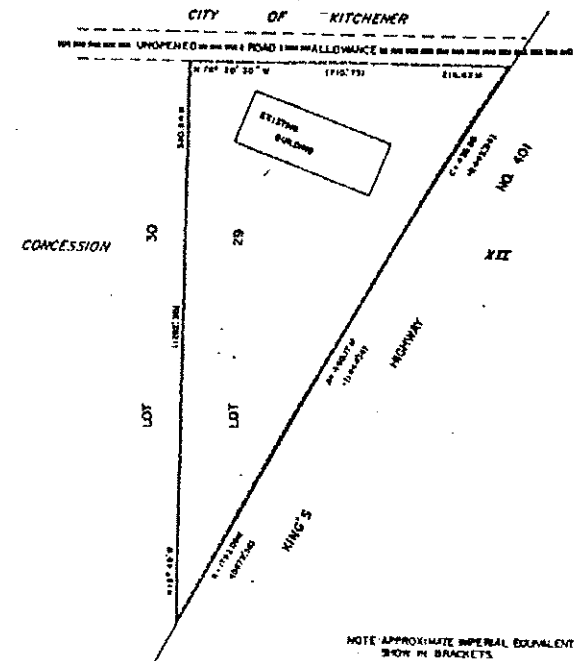
SCALE: 1:2500
SEE PART 139 - SCHEDULE 'B'

SECTION 20.1.44

PART OF LOT 29
CONCESSION XII
TOWNSHIP OF NORTH DUMFRIES



NOTE: APPROXIMATE IMPERIAL EQUIVALENTS
SHOWN IN BRACKETS.



THIS IS SCHEDULE 'A' TO BY-LAW 689-83,
PASSED THIS 18th DAY OF July, 1983.

Franklin A. Lissu
MAYOR

Harry Griffin
CLERK

SCALE: 1:2500
SEE PART 93 - SCHEDULE 'B'

SECTION 20.1.45