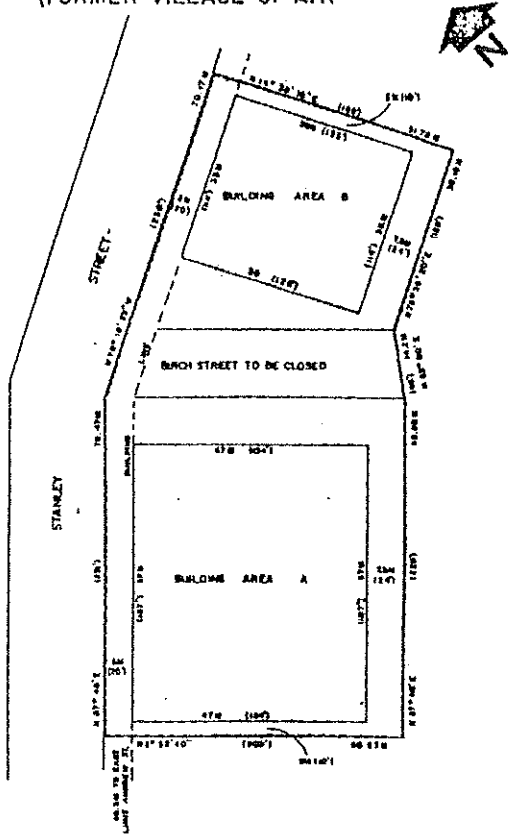


PART OF LOTS 9 & 17
 REGISTERED PLAN NO. 661
 AND
 PART OF BIRCH STREET
 TOWNSHIP OF NORTH DUMFRIES
 (FORMER VILLAGE OF AYR)



NOTE: APPROXIMATE IMPERIAL EQUIVALENTS SHOWN IN BRACKETS.

THIS IS SCHEDULE 'A' TO BY-LAW 689-83,
 PASSED THIS 18th DAY OF July, 1983.

Franklin A. Lisao
 MAYOR

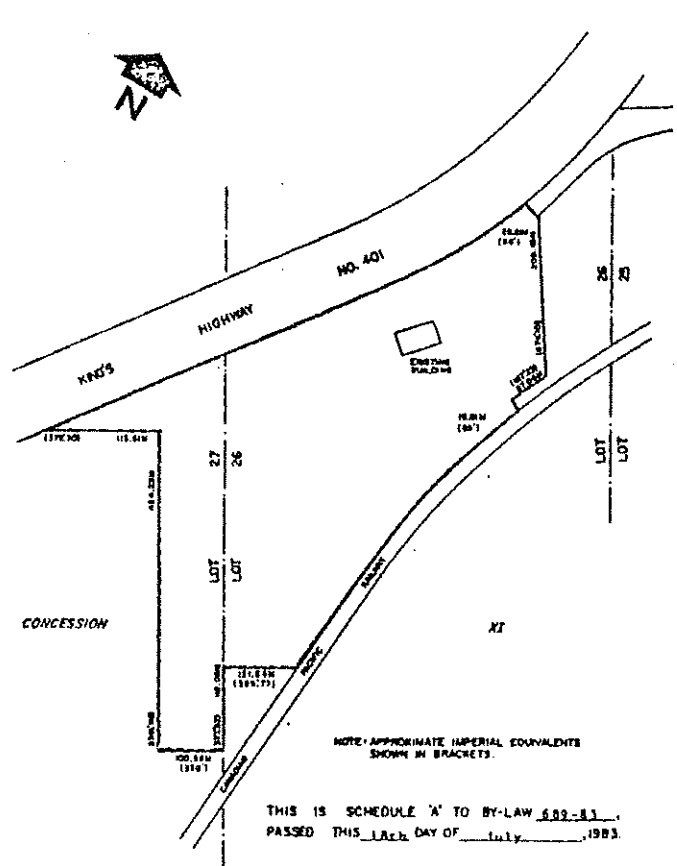
Harry Griffin
 CLERK

SCALE: 1:750
 SEE PART B9-SCHEDULE 'B'

SECTION 20.1.46

SEE PART B2-SCHEDULE 'B'
 SCALE: 1:5000

PART OF LOTS 26 & 27
 CONCESSION XI
 TOWNSHIP OF NORTH DUMFRIES



NOTE: APPROXIMATE IMPERIAL EQUIVALENTS SHOWN IN BRACKETS.

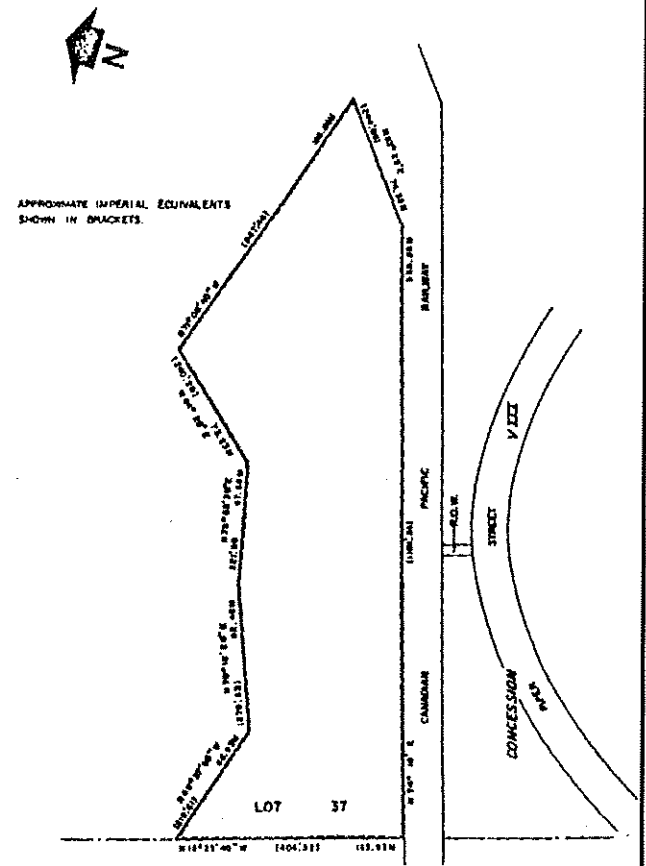
THIS IS SCHEDULE 'A' TO BY-LAW 689-83,
 PASSED THIS 18th DAY OF July, 1983.

Franklin A. Lisao
 MAYOR

Harry Griffin
 CLERK

SECTION 20.1.47

PART OF LOT 37
 CONCESSION VIII
 TOWNSHIP OF NORTH DUMFRIES



APPROXIMATE IMPERIAL EQUIVALENTS SHOWN IN BRACKETS.

THIS IS SCHEDULE 'A' TO BY-LAW 689-83,
 PASSED THIS 18th DAY OF July, 1983.

Franklin A. Lisao
 MAYOR

Harry Griffin
 CLERK

SCALE: 1:2000
 SEE PART 139-SCHEDULE 'B'

SECTION 20.1.48