

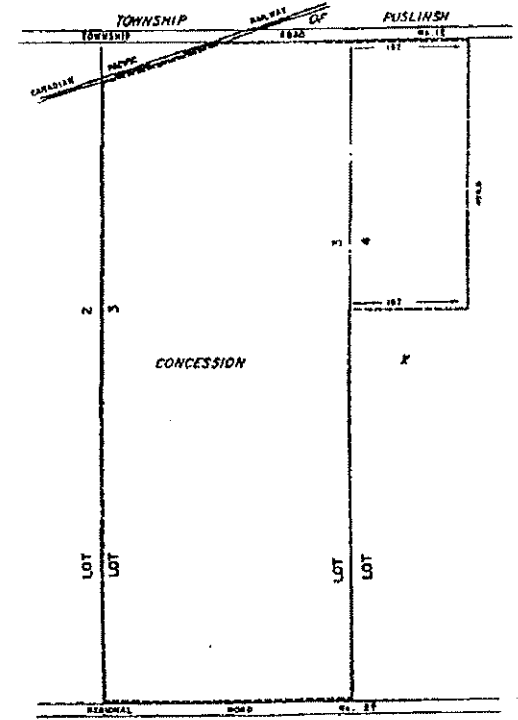
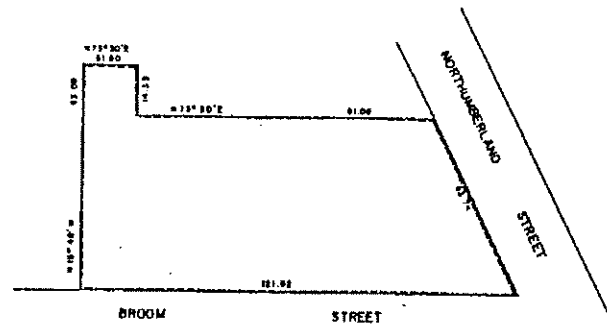
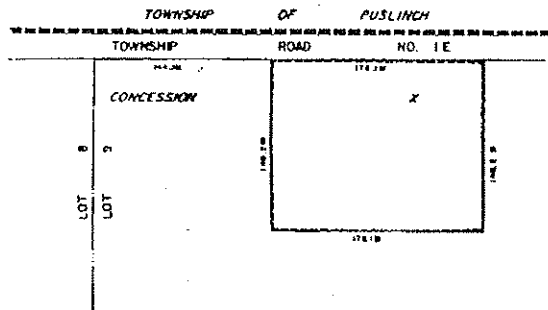
PART OF LOT 9  
CONCESSION X  
TOWNSHIP OF NORTH DUMFRIES  
(BEVERLY SECTION)



PART OF LOT 3  
REGISTERED PLAN NO. 680  
TOWNSHIP OF NORTH DUMFRIES  
(FORMER VILLAGE OF AYR)



PART OF LOTS 3 & 4  
CONCESSION X  
TOWNSHIP OF NORTH DUMFRIES  
(BEVERLY SECTION)



THIS IS SCHEDULE 'A' TO BY-LAW 682-83,  
PASSED THIS 18th DAY OF July, 1983.

Franklin A. Lisso  
WARD

Harry Griffin  
CLERK

THIS IS SCHEDULE 'A' TO BY-LAW 763-84,  
PASSED THIS 20th DAY OF August, 1984.

Franklin A. Lisso  
WARD

Harry Griffin  
CLERK

THIS IS SCHEDULE 'A' TO BY-LAW 763-84,  
PASSED THIS 20th DAY OF August, 1984.

Franklin A. Lisso  
WARD

Harry Griffin  
CLERK

SEE PART 137-SCHEDULE 'B'  
SCALE 1:3000

SECTION 20.1.106

SCALE 1:1000  
SEE PART 139-SCHEDULE 'B'

SECTION 20.1.107

SCALE 1:6000  
SEE PARTS 134 & 135-SCHEDULE 'B'

SECTION 20.1.108