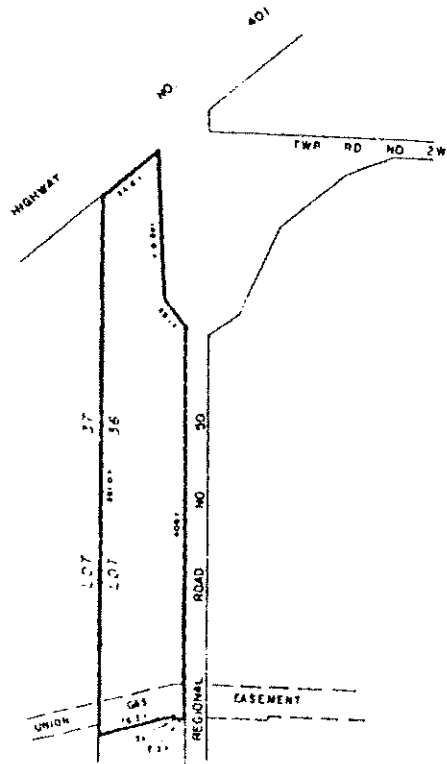


PART OF LOT 36
CONCESSION IX
TOWNSHIP OF NORTH DUMFRIES



SUBJECT LANDS OUTLINED THUS _____

THIS IS SCHEDULE 'A' TO BY-LAW 1073.88,
PASSED THIS 22ND DAY OF JULY, 1988

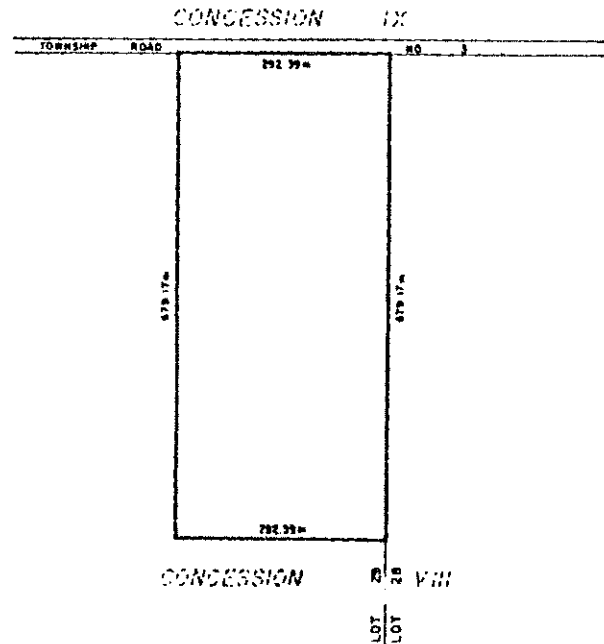
J. MARTENS
WATER

HARRY GRIFFIN
SENIOR CLERK

SEE PART 61 - SCHEDULE B
SCALE 1:3600

SECTION 20.1.136

PART OF LOT 29
CONCESSION VIII
TOWNSHIP OF NORTH DUMFRIES



THIS IS SCHEDULE 'A' TO BY-LAW 1055.88,
PASSED THIS 24TH DAY OF MAY, 1988.

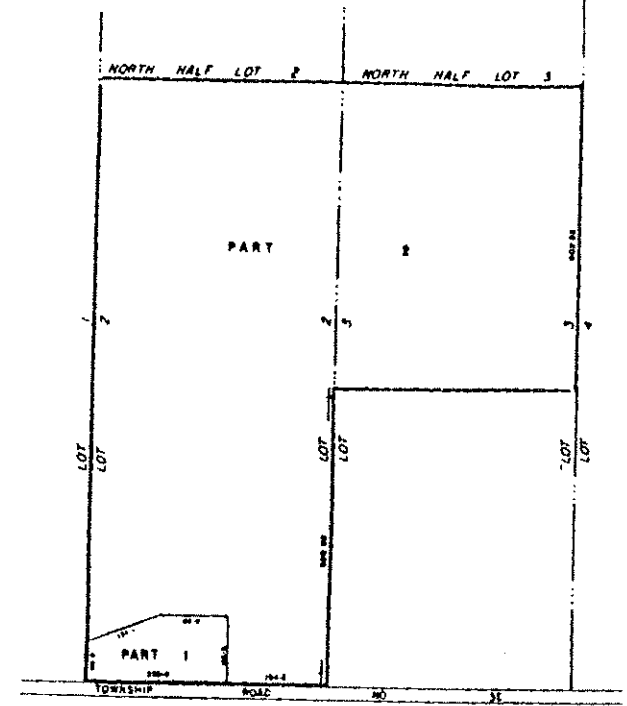
J. MARTENS
WATER

J. Mc DUTCHEON
CLERK

SEE PART 39 - SCHEDULE 'B'
SCALE 1:5000

SECTION 20.1.137

SOUTH HALF LOT 2 & PART OF
SOUTH HALF LOT 3
CONCESSION VIII
TOWNSHIP OF NORTH DUMFRIES
(BEVERLY SECTION)



SUBJECT AREA OUTLINED THUS _____

THIS IS SCHEDULE 'A' TO BY-LAW 1085.88,
PASSED THIS 6TH DAY OF JUNE, 1988.

J. MARTENS
WATER

J. Mc DUTCHEON
CLERK

SECTION 20.1.138