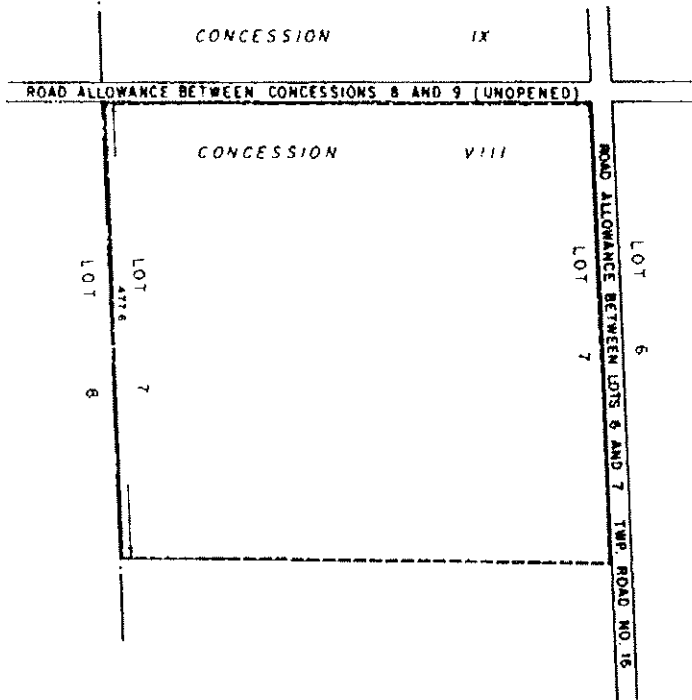


PART OF LOT 7
 CONCESSION VIII
 (PARTS 3,4,5,6 & 7
 PLAN 67R-3013)
 TOWNSHIP OF NORTH DUMFRIES



SUBJECT LANDS OUTLINED THUS _____

THIS IS SCHEDULE 'A' TO BY-LAW 1111-88,
 PASSED THIS 25th DAY OF NOVEMBER, 1988

J. MARTENS
 MAYOR

H. GRIFFIN
 ACTING CLERK

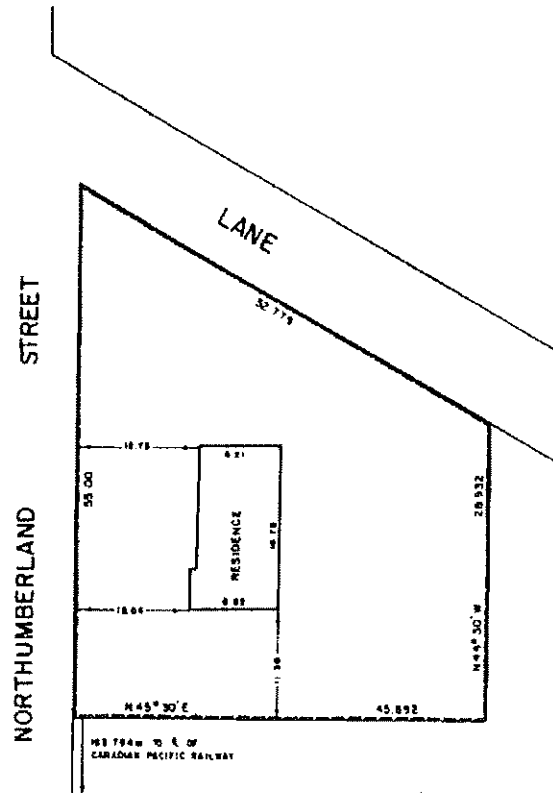
SEE PART 25 - SCHEDULE 'B'
 SCALE: 1:2000

SECTION 20.1.145

PART OF LOT 2, REG. PLAN NO. 679
 TOWNSHIP OF NORTH DUMFRIES
 (AYR SETTLEMENT AREA)



SUBJECT LANDS OUTLINED THUS _____



THIS IS SCHEDULE 'A' TO BY-LAW 1140-89,
 PASSED THIS 28th DAY OF MARCH, 1989.

J. MARTENS
 MAYOR

W. BOSETTI
 CLERK

SEE PART 139 - SCHEDULE 'B'
 SCALE: 1:400

SECTION 20.1.146

20.1.147
 PENDING