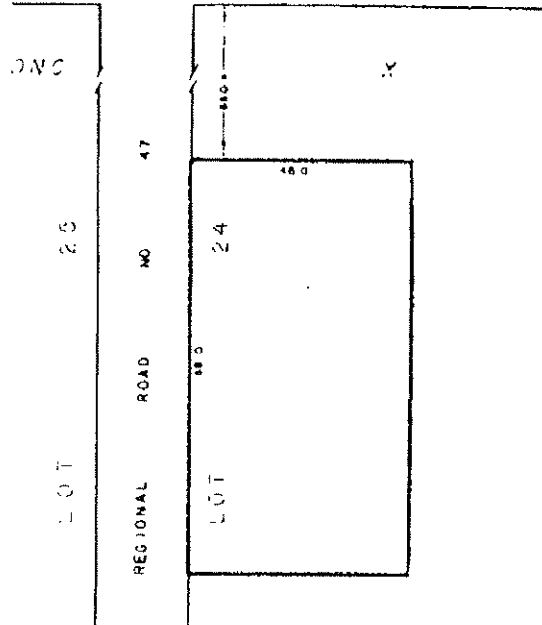


PART OF LOT 24
CONCESSION X
TOWNSHIP OF NORTH DUMFRIES



REGIONAL ROAD NO. 47



20.1.152
Pending

SUBJECT LANDS OUTLINED THUS _____

THIS IS SCHEDULE 'A' TO BY-LAW 1123-89,
PASSED THIS 23RD DAY OF OCTOBER, 1989

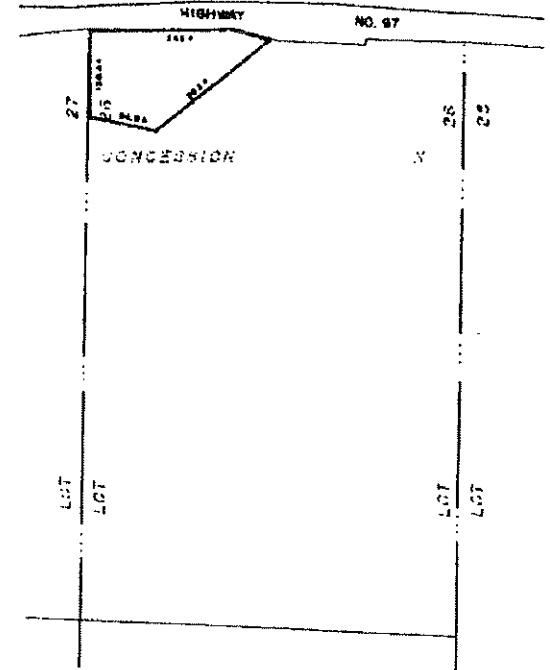
J. MARTENS
C.L.M.

M. BOSETTI
C.L.M.

PART 68 - SCHEDULE 'B'
SCALE 1:750

SECTION 20.1.151

PART OF LOT 26
CONCESSION X
TOWNSHIP OF NORTH DUMFRIES



SUBJECT LANDS OUTLINED THUS _____

THIS IS SCHEDULE 'A' TO BY-LAW 1186-89,
PASSED THIS 25TH DAY OF SEPTEMBER, 1989.

J. MARTENS
C.L.M.

M. BOSETTI
C.L.M.

SEE PART 68 SCHEDULE 'B'
SCALE 1:4800

SECTION 20.1.153