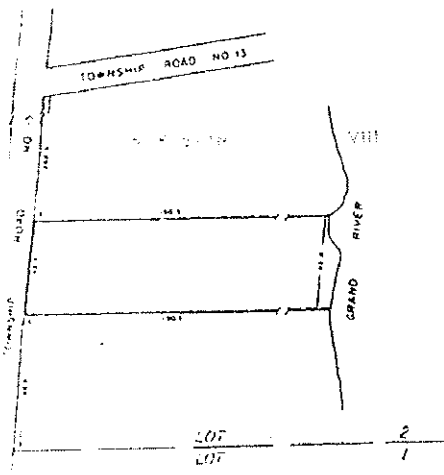


PART OF SUB LOT 2, W.G.R.
CONCESSION VIII
TOWNSHIP OF NORTH DUMFRIES



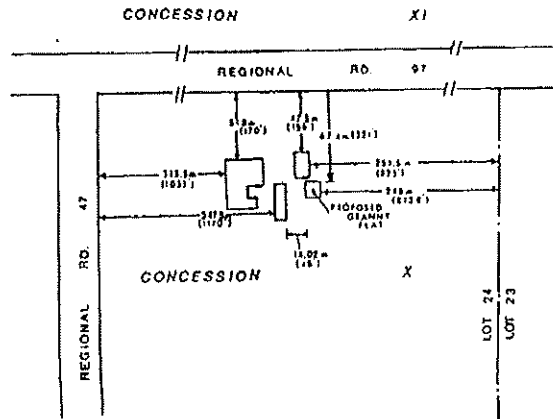
RESPECT PROPERTY OUTLINED THIS
IS SCHEDULE A TO BY-LAW 1224-90,
PASSED THIS 22nd DAY OF JULY, 1990.

[Signature]

[Signature]

SECTION 20.1.157

CONCESSION X
TOWNSHIP OF NORTH DUMFRIES



NOTE: APPROXIMATE IMPERIAL EQUIVALENTS SHOWN IN BRACKETS

THIS IS SCHEDULE X TO BY-LAW 1324-91,
PASSED THIS 22nd DAY OF JULY, 1991

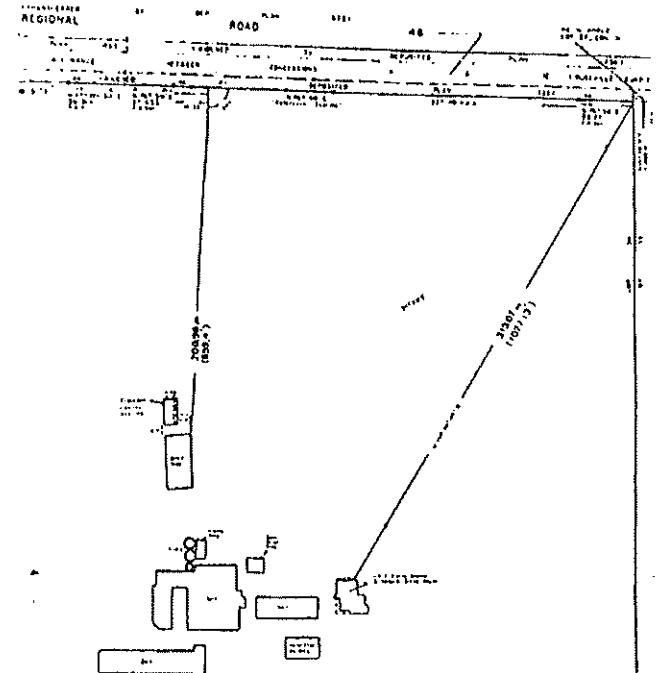
[Signature]

[Signature]

SEE PARTS 67 & 68 SCHEDULE 'B'
SCALE: 1:2500

SECTION 20.1.160

PART OF LOT 34
CONCESSION XI
TOWNSHIP OF NORTH DUMFRIES



THIS IS SCHEDULE X TO BY-LAW 1322-91,
PASSED THIS 23rd DAY OF SEPTEMBER, 1991

[Signature]

[Signature]

NOTE: APPROXIMATE IMPERIAL EQUIVALENTS SHOWN IN BRACKETS

SEE PART 86 SCHEDULE 'B'
SCALE: 1:1250

SECTION 20.1.161