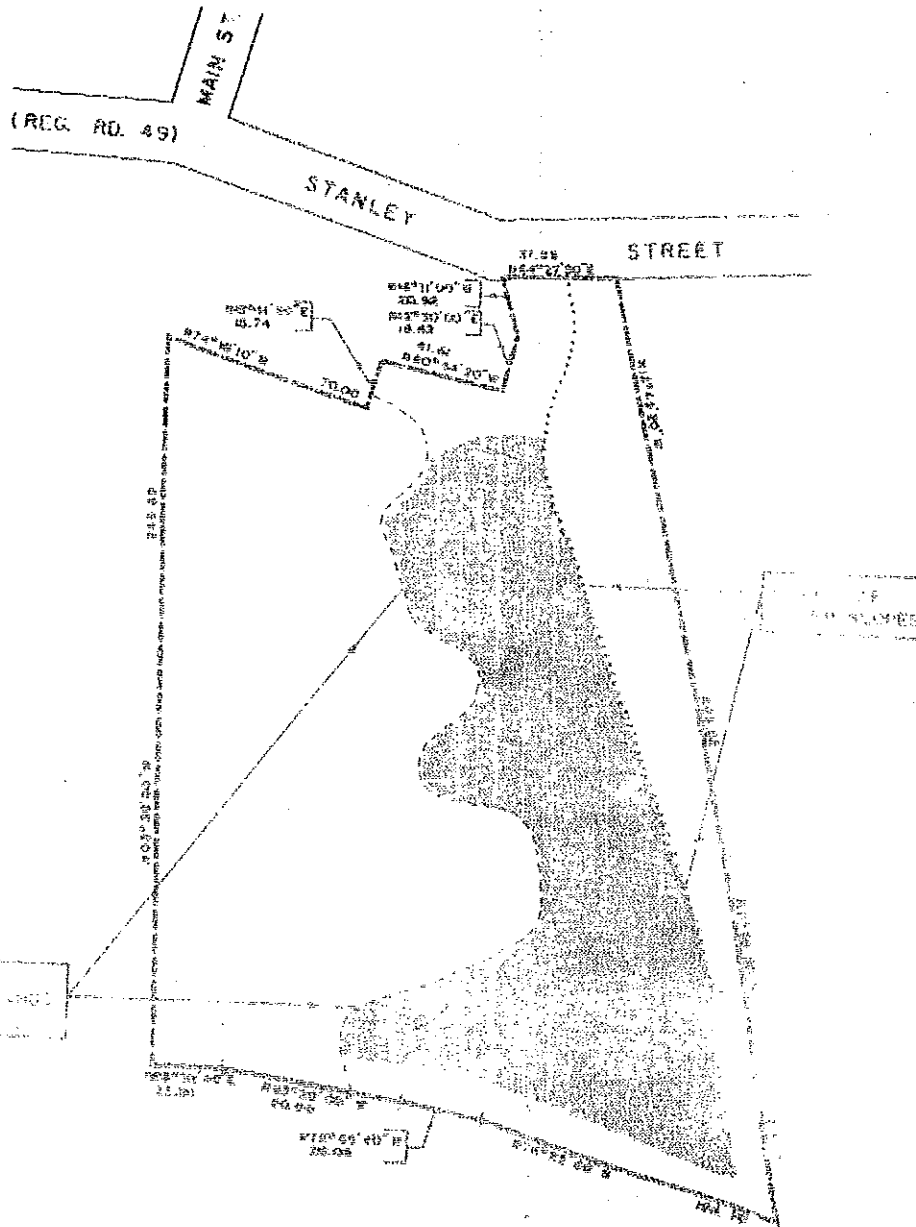


PART OF LOTS 18, 19 AND 20  
SOUTH OF STANLEY STREET  
PARTS 1 AND 3, PLAN 67R-664  
(AYR SETTLEMENT AREA)



SUBJECT LANDS OUTLINED THUS  
BUILDABLE AREA SHOWN THUS  
THIS IS SCHEDULE 'A' TO BY-LAW 1222  
PASSED THIS 1<sup>ST</sup> DAY OF May 1990.

*[Signature]*  
MAYOR  
*[Signature]*  
CLERK